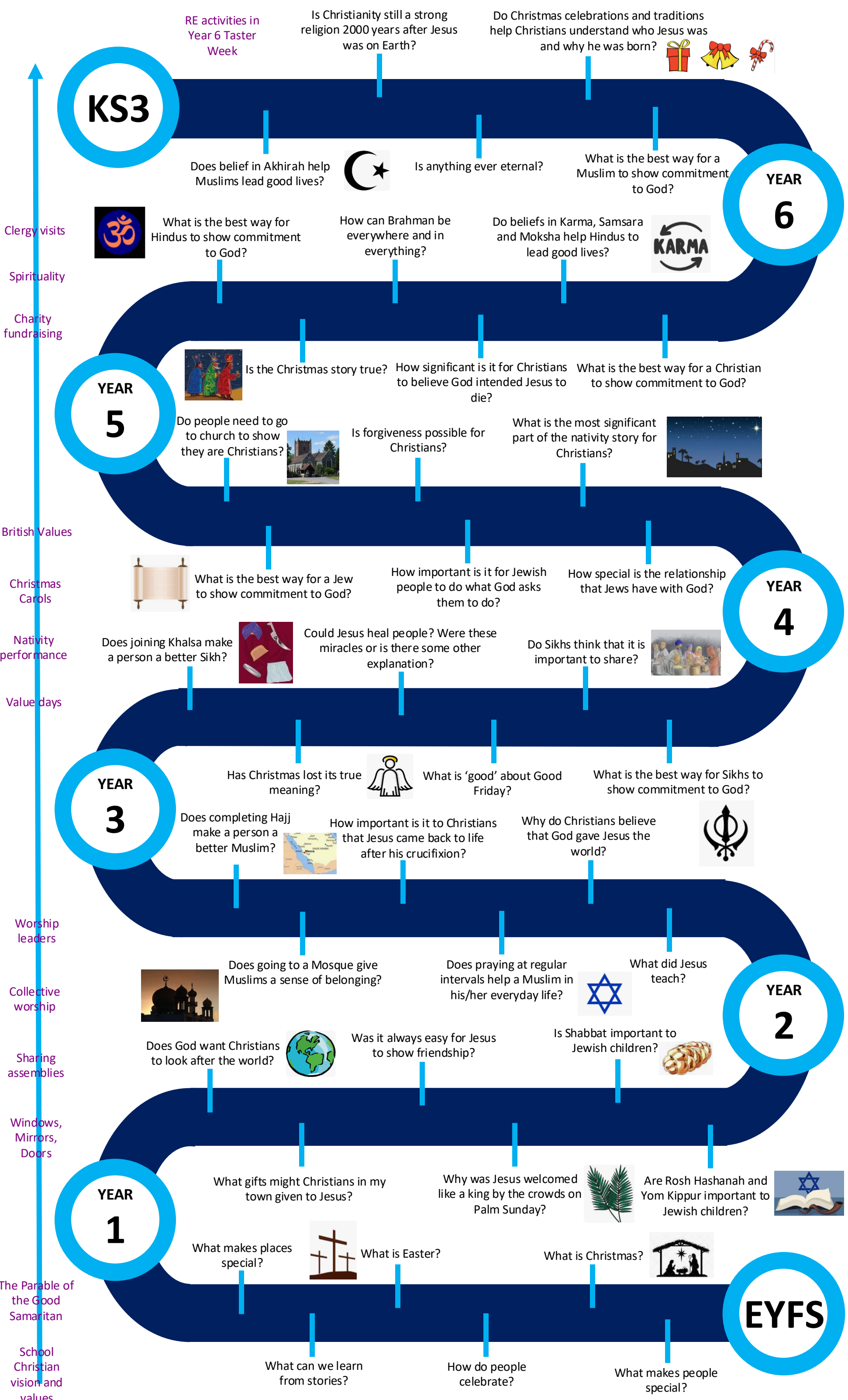


The Piggott School: Charvil Primary Religious Education Learning Journey



During continuous provision, learning and discovery and discrete RE lessons, pupils will discuss people in their immediate family and community, understand that some members of the community may have places that are special to them, recognise that people have different beliefs and celebrate special times in different ways and learn some similarities and differences between religious and cultural communities in England.